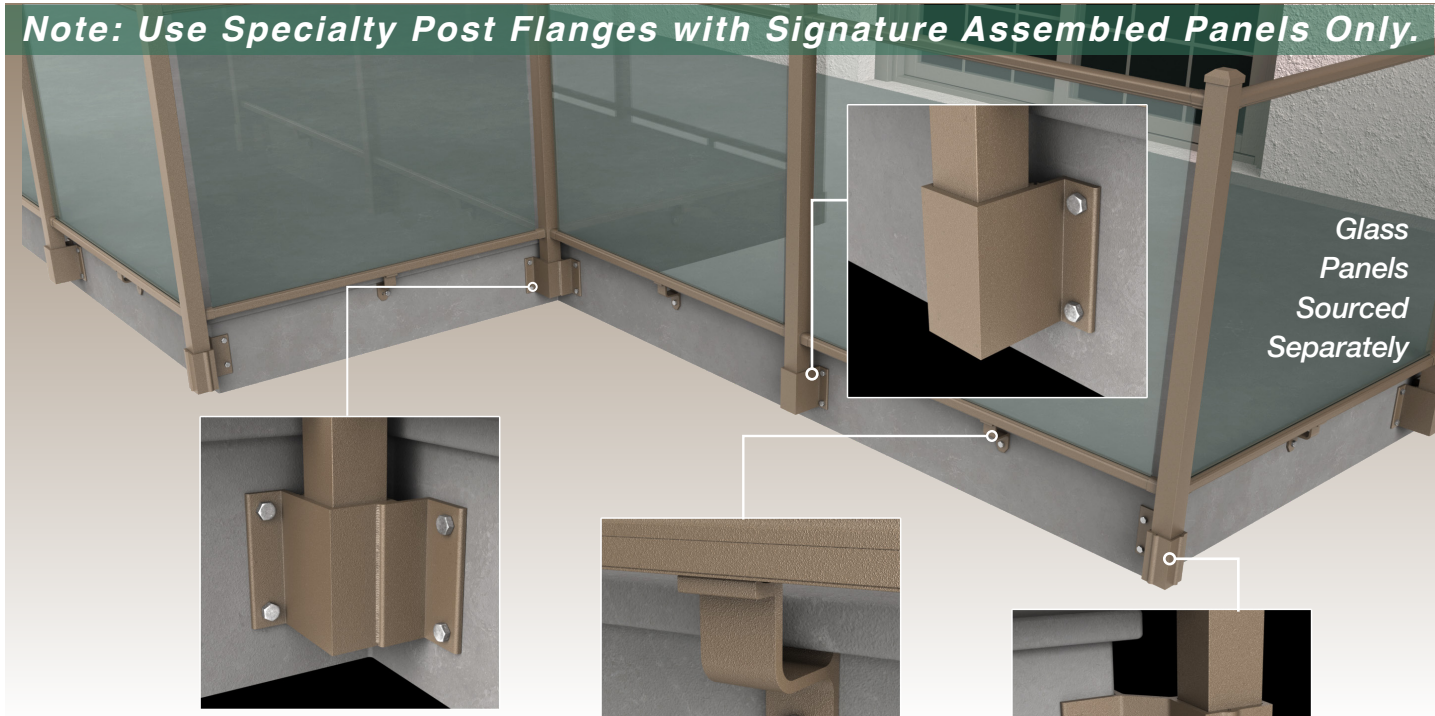




Ultra Aluminum™ Specialty Post Flanges are Designed for Strength, Versatility and Innovation.

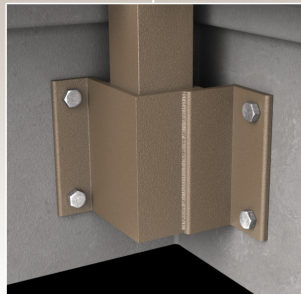
Ultra Aluminum™ helps tap into your desire to explore some exciting new railing designs and configurations. We've developed a series of flange extensions to allow your railing to 'float' outside of the surface of your balcony, porch or decking. There are different flanges for inside corners, outside corners as well as support brackets for bottom rails.

Note: Use Specialty Post Flanges with Signature Assembled Panels Only.

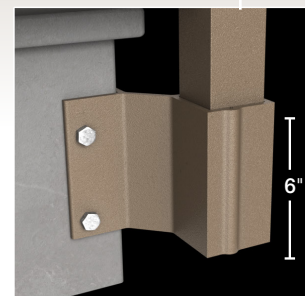


2" Stub Mount

A very substantial 12" tall aluminum extrusion with an outer dimensions of 2" to fit a 2.5" boss.

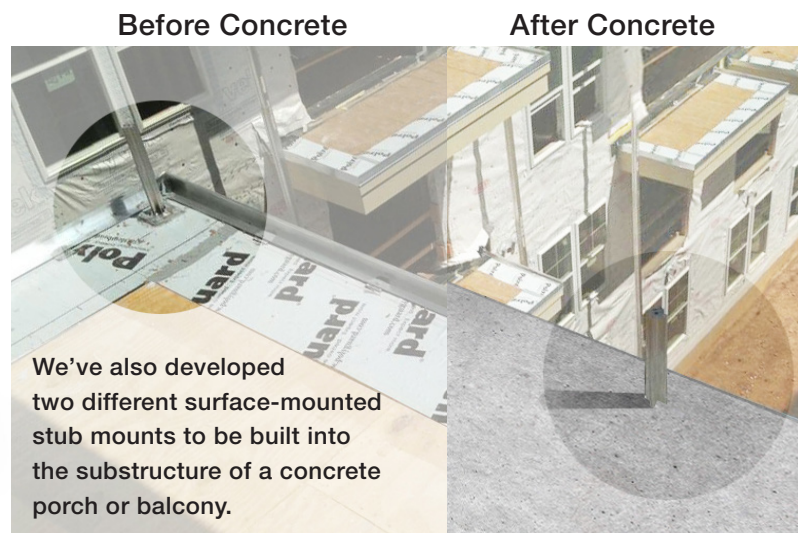


Bottom Rail
Support Required

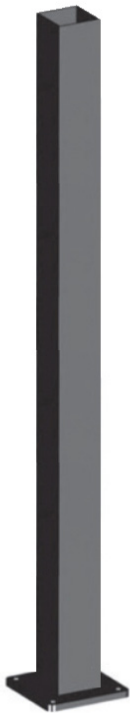


X-Spline Stub Mount

1.75" outside dimensions to fit a 2" post.

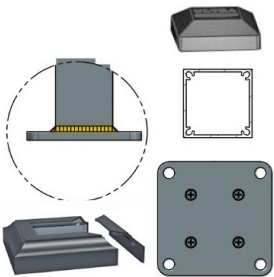


We've also developed two different surface-mounted stub mounts to be built into the substructure of a concrete porch or balcony.



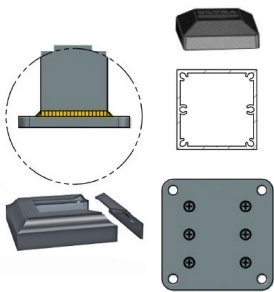
2", 2-1/2" and 3" Residential Post Kit For wood or concrete applications.
Includes: cap, post, 3/8" flange, flange cover, and 2 wedges.
Fastening Hardware NOT included. Enter Color Code when ordering.

MODEL NUMBER	DESCRIPTION	ADDITIONAL
UMXP-20125-38-__	Post 2" x 2" x 38"	With mount & flange cover
UMXP-20125-44-__	Post 2" x 2" x 44"	With mount & flange cover
UMXP-20125-54-__	Post 2" x 2" x 54"	With mount & flange cover
UMXP-25100-38-__	Post 2-1/2" x 2-1/2" x 38"	With mount & flange cover
UMXP-25100-44-__	Post 2-1/2" x 2-1/2" x 44"	With mount & flange cover
UMXP-25100-54-__	Post 2-1/2" x 2-1/2" x 54"	With mount & flange cover
UMXP-30125-38-__	Post 3" x 3" x 38"	With mount & flange cover
UMXP-30125-44-__	Post 3" x 3" x 44"	With mount & flange cover
UMXP-30125-54-__	Post 3" x 3" x 54"	With mount & flange cover



3" Commercial Post Kit For wood or concrete applications.
Includes: cap, post, 1/2" flange, flange cover, and 2 wedges.
Fastening Hardware NOT included. Enter Color Code when ordering.

MODEL NUMBER	DESCRIPTION	ADDITIONAL
UMXP-C6-30125-38-__	Post 3" x 3" x 38"	With mount & flange cover
UMXP-C6-30125-44-__	Post 3" x 3" x 44"	With mount & flange cover
UMXP-C6-30125-54-__	Post 3" x 3" x 54"	With mount & flange cover



4" Post Sleeve
Cap and Skirt sold separately below. Enter Color Code when ordering.

MODEL NUMBER	DESCRIPTION
UMXP-40125-38-__	Post Sleeve 4" x 4" x 38"
UMXP-40125-44-__	Post Sleeve 4" x 4" x 44"
UMXP-40125-54-__	Post Sleeve 4" x 4" x 54"

Colors

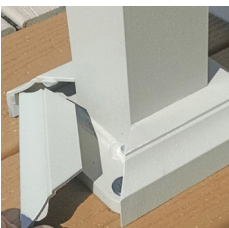
The powder-coated finishes available for Ultra Aluminum™ Specialty Flanges and Posts are all applied with a special Ultra Powercoat™ finish—to meet AAMA-2604-5 Standards and to resist harsh weather and heat.

BL	TB	BR	TZ	BE	TK	WH	TW	GR	SI
Gloss Black	Textured Black	Gloss Bronze	Textured Bronze	Gloss Beige	Textured Khaki	Gloss White	Textured White	Gloss Green	Silver (RAL 9006)

Colors shown represent an approximate comparison and may vary slightly from actual product color.

Caps and Accessories

Enter Color Code when ordering



MODEL NUMBER	DESCRIPTION
HCP-20-__	2" Cap
HWC-420-__	2" Flange Cover
HCP-25-__	2-1/2" Cap
HWC-525-__	2-1/2" Flange Cover
HCP-30-__	3" Cap
HWC-530-__	3" Flange Cover
HCP-40-__	4" Cap
HWC-400-__	4" Flange Cover



UP 1-19

